

Environment Scrutiny Commission

Tuesday 27 February 2024
7.00 pm
160 Tooley Street, London SE1 2QH

Presentations

List of Contents

Item No.	Title	Page No.
6.	Incredible Edible Victoria Sherwin, a director of Incredible Edible, will present on their work in Lambeth.	1 - 12
7.	Insectinside Penny Frith will present on her work documenting life in the bushes of a small Peckham park. https://insectinside.me/page/2/	13 - 77
8.	Meristem Meristem will be providing information on their rain gardens and Sustainable Drainage Systems (SuDS). https://www.meristemdesign.co.uk/	78 - 82
9.	Improving biodiversity in Southwark : Sustainable Drainage Systems (SuDS) de-paving, pocket parks, and other measures Simon Saville, Chair of Surrey & SW London Butterfly, and co-optee , will present the enclosed report.	83 - 88

Contact

Julie Timbrell on 020 7525 0514 or email: julie.timbrell@southwark.gov.uk

Date: 8 March 2024

List of Contents

Item No.	Title	Page No.
10.	Southwark Nature Action Volunteers: Recommendations for Nature Recovery In Southwark Southwark Nature Action Volunteers (SNAV) will present the enclosed report outlining recommendations for nature recovery. In addition a report on Depaving is enclosed.	89 - 102
12.	Officer report on supporting community food growing and gardening	103 - 121



'If you eat, you're in'

Our history

It all started in Todmorden (in Yorkshire) in 2008 when the Incredible Edible network was set up, and in 2012 Incredible Edible Lambeth was established as a Community Interest Company.

We are celebrating our 11th birthday this year, nearly teenagers...!!!



Our aim

was to galvanise people and communities through growing and celebrating food.

- We wanted to encourage people to look at their local patch and see how they can transform it into a food growing space.
- We wanted to support a local food economy that thrives, employs more local people and keeps money in Lambeth.



Our vision

Our vision is to create a localized food network providing an abundance of affordable, nutritious fruit and veg, with a food growing space within 100 metres of every home



Our members

There are **120 group members** and beneficiary groups growing food in Lambeth

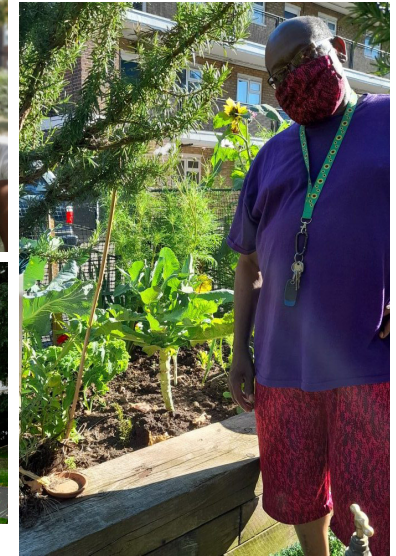
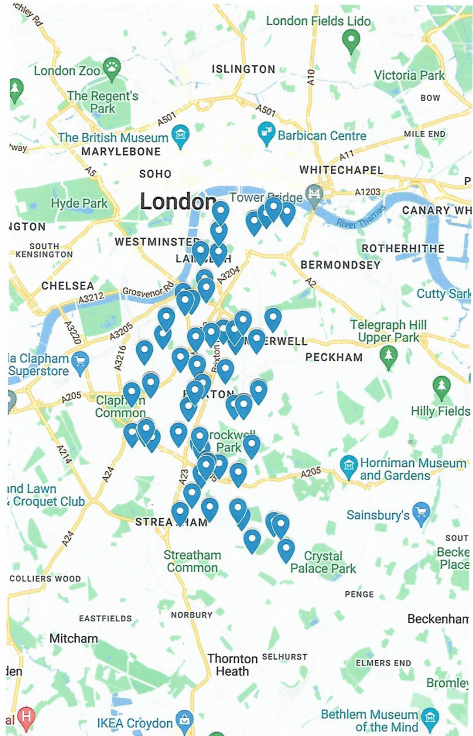
562 individuals have signed up as IEL members

Group members 2023

group members postcodes.xlsx

All items

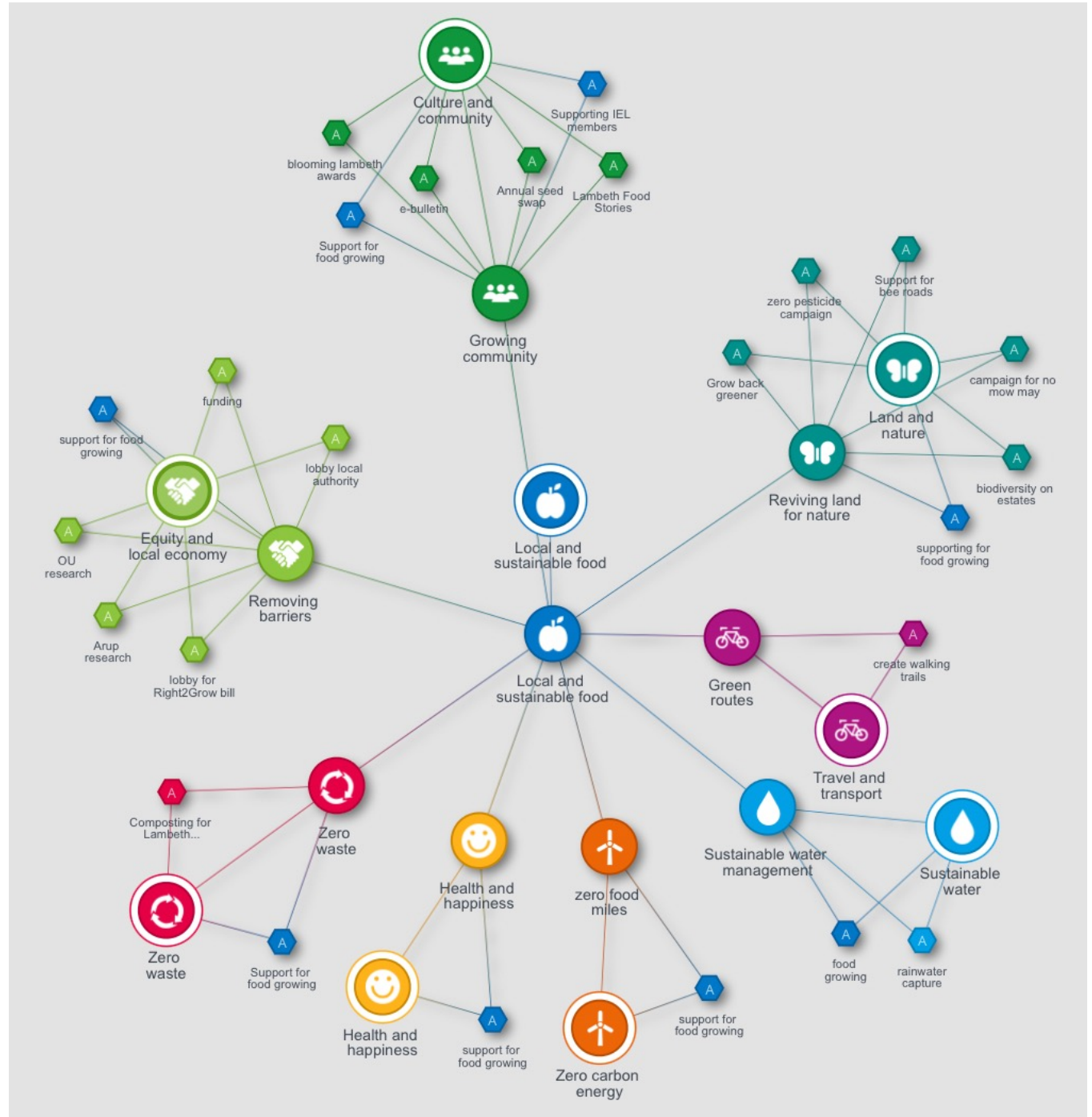
A map of IEL group members in July 2023



Our goals

We have matched our goals against the UN Sustainable Development Goals and Lambeth Council's goals

We use One Planet to map our progress
One Planet helps us map and join up



What we do

- Monthly ebulletin

we have over 1000 and have a 60% open rate

- Annual seed swap

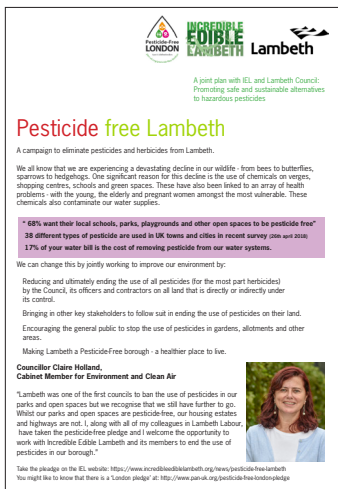
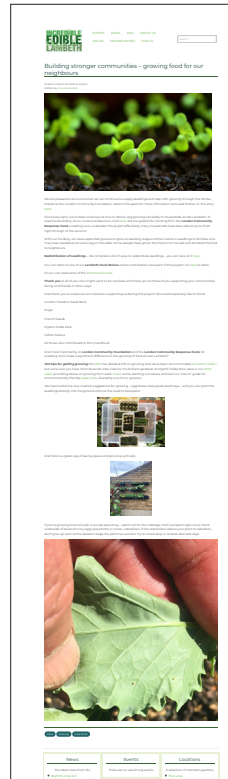
we had nearly 100 people attended in 2023

- Blooming Lambeth Awards

(28 winners in 2023 in 8 categories with over 3000 votes in the 4 public categories)

- Campaigning

We campaign for the Right to Grow food on land in the public realm (We lobbied to stop the use of pesticides on our streets and open spaces, we also lobbied our councillors and officers over 5 years to bring in these changes to help wildlife and our health. We are part of the No Mow May campaign.



Our past projects

- Grow back greener

Project 2020-22

Funded by Mayor of London's fund

We provided 6 groups with mentoring and funding to design and install new gardens, and to improve biodiversity and food growing with ways to look after the land around us
We drew up a Template of Engagement between Lambeth and food growers

Grow Back Greener projects:

- * Myatt's Fields South
- * Ethelred
- * Holland Town
- * Vauxhall Gardens
- * Central Hill
- * St Martin's Estate

INCREDIBLE EDIBLE LAMBETH Grow back greener **AWARD**

Chalice Way's Green corner

These space has been transformed by nearby residents to make the space more enjoyable for everyone!

Together we want to make our estate more beautiful and enjoyable... We want to create spaces that create occasions for the community to get together... We want to see more green and less grey!

If you'd like to do the same where you live, or if you have a place you'd like to improve, and would love to get involved, we would like to hear from you.

Scan the QR codes to know more or send us a text or email!

Contacts: Scan: St Martin's webpage on IEL's website. Scan: St Martin's TRA's blog

Email us at: Perry.Toles@iel.co.uk
Text us at: 07526324172



INCREDIBLE EDIBLE LAMBETH

Template of engagement for biodiversity and food growing on our estates February 2021

Our Vision
We want to see residents connect with the land around them, bringing people together and creating real value from the spaces we share, for both community and wildlife. We want to see the land managed for optimum biodiversity, increased opportunities for all residents to garden and grow food, and for these spaces to be beautiful and enjoyed by everyone.

Managed in this way, estate green spaces will contribute to Lambeth Council's carbon reduction targets supporting the Climate Change Action Plan, improve the health and wellbeing of estate residents supporting Lambeth Council's Health and Wellbeing Strategy, reduce pollution, support Lambeth Council's Food Poverty Action Plan, increase pollinator numbers supporting Lambeth Council's Biodiversity Action Plan, save money and build more caring communities.

Resident Consultation
This document came about because Incredible Edible Lambeth was approached by numerous residents from different estates who were unhappy about how their land was being managed for convenience, rather than for people and planet.

IEL secured funding from the Mayor of London's Grow Back Greener fund to carry out a consultation with residents across six housing estates to discuss how their estate land could be managed differently for the community, for biodiversity and for food growing. Over the past four months, we have met regularly via zoom to collect qualitative data that informs this document.

Our past projects

- 2021 Virtual seed swap

Project 2021

Funding :The London Community Foundation

Along with several of our partners and our local gardens and gardening groups we were able respond to Lambeth's communities affected by the Covid-19 pandemic with a focus on food security and health and wellness.

2021 Virtual Seed Swap

- Seeds sent via post due to Covid
- Franchi Seeds provided IEL with a generous donation
- Sent 31 varieties of vegetables which we split into over 1400 individual seed packets to distribute
- Included at least one package of "Real Seeds" for seed saving
- Included seeds from previous year's seed swap as well
- Provided seeds and seedlings to over 100 households, 8 schools, 20 community gardens and 4 Lambeth Estates

Winter Seedlings

Over 2000 seedlings grown by Myatt's Fields Park for IEL members.

We grew: Mizuna Spinach Spring Onions, and Spring Cabbage



Our latest projects

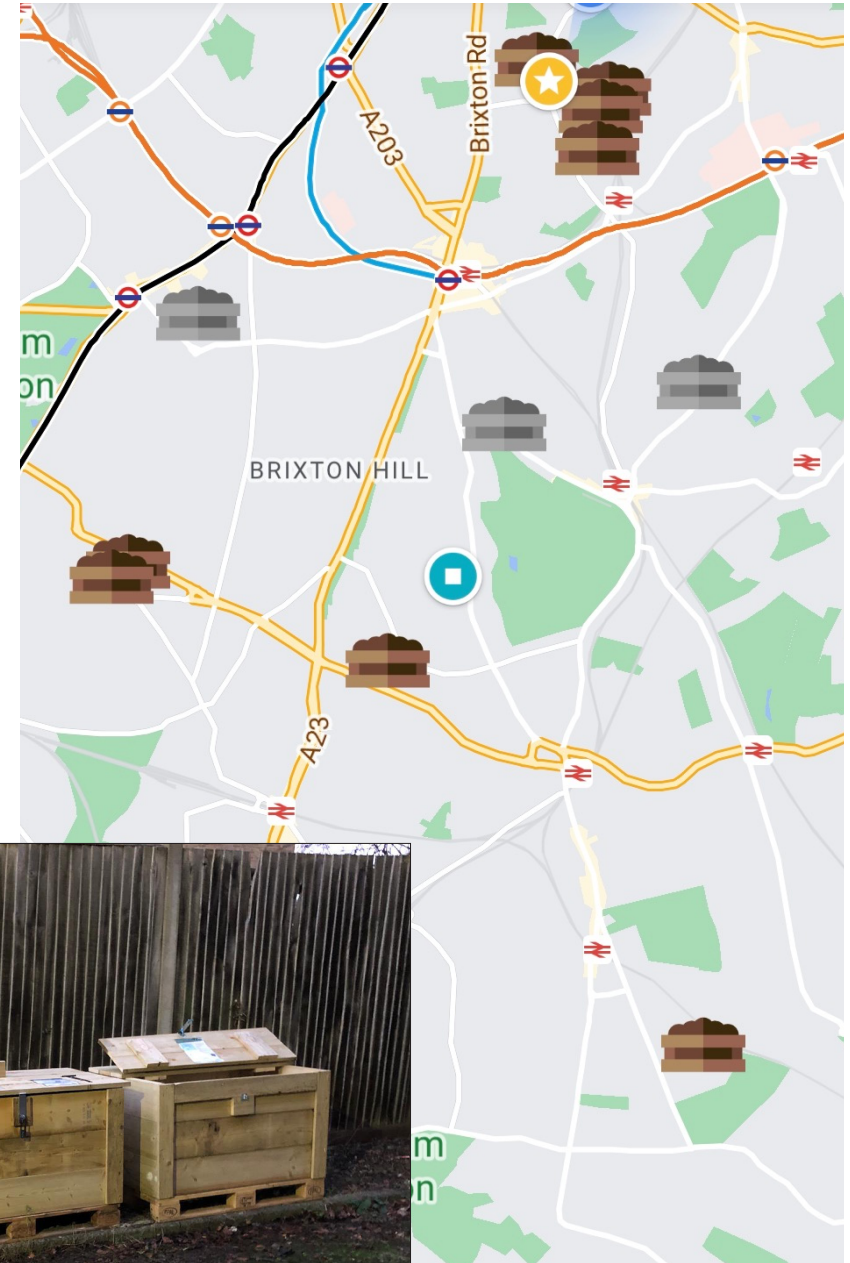
- Zero waste

Composting project 2022-24
Funded by CAF (Climate Action Fund)

Installed compost bins on 11 estates

Supporting groups to engage people including providing funding for events, upskilling in social media, poster design, how to set up a TRA

- * Poynders Garden Estate
- * Agnes Riley Garden
- * Paulet Rd (2 locations)
- * Gordon Grove
- * Myatts Field South
- * Benton Lane
- * Dorchester Court
- * Nelson Row
- * Brockwell Park Estate
- * St Martins Estate



Our latest projects

- TFL Walking maps

Project 2022-24

Funded by Groundwork and TFL :Walking & Cycling Grants London (WCGL)

To produced 2-3 walking maps

The Challenge:

Get people walking in their area- taking side or quiet roads through green spaces they didn't know about, get out into nature, see what is happening in your neighbourhood.

Walking is carbon and emission free, so it is good for London's environment and good for walkers too!

Ditch the car for short trips and walk or cycle instead.

The science shows that if every Londoner walked for 20 minutes each day, there would be £1.7bn savings to the NHS in treatment costs over 25 years.

When things feel mentally tough, go on a 20 minute walk. It can help reduce feelings of stress and anxiety.

The science shows that 20-30% of cases of depression could be prevented by people treating themselves to a walk.

Unfortunately 4 in 10 children in London are overweight or obese.

It is one of the highest levels in England.

Incredible Edible Streatham
Sustains 100 homes

These two trails take you on a voyage of discovery around the many green spaces and social outdoor spots in Streatham. On the map, we have highlighted places for children to play and enjoy Nature, places to grow food and places to eat. We hope it enables you to connect with your local community and get growing!

Incredible Edible Lambeth is a network of food growers, food entrepreneurs and food activists who are working to improve our communities.

Our motto is 'If you eat, you're in' - it's that simple. Everyone can get involved with us - join our network today by signing up to become a member at www.incredibleediblelambeth.org

Membership is free and you will immediately be linked with hundreds of other growers, green spaces, allotments, gardens, parks and more throughout the borough.

Get in touch:
www.incredibleediblelambeth.org
questions@incredibleediblelambeth.org
[facebook.com/ediblelambeth](https://www.facebook.com/ediblelambeth)
[instagram.com/ediblelambeth](https://www.instagram.com/ediblelambeth)
[linkedin.com/company/ediblelambeth](https://www.linkedin.com/company/ediblelambeth)

Incredible Edible Streamtham
Please refer to the map for the location listed

Trail one: Streamtham South (5956 steps = 4.54km)
 1. Goodday Garden
 2. Hillside Gardens Park
 3. Lamercoast Estate
 4. Streamtham Wells Primary School
 5. Palace Road Nature Garden
 6. Palace Road Estate wild flower verge
 7. St Martin's Chisle Way
 8. St Upper Tulse Hill
 9. Holmwood Gardens (also open 9.30am - 10.30am weekly)
 10. St Thomas's Community Garden

Trail two: Streamtham Hill (4434 steps = 3.39km)
 1. Streamtham Memorial
 2. Streamtham Common
 3. The Rookery
 4. Streamtham Common Community Garden
 5. Streamtham Common-Part of the Great North Wood
 6. Russell's Footpath
 7. Lingale Woods
 8. Valley Road Playing Fields
 9. Sunnyhill Nature Garden
 10. Westcott Road planters
 11. Ralston Community Garden

Incredible Edible Stockwell
Sustains 100 homes

These two trails take you on a voyage of discovery around the many green spaces and social outdoor spots in Stockwell. On the map, we have highlighted places for children to play and enjoy Nature, places to grow food and places to eat. We hope it enables you to connect with your local community and get growing!

Incredible Edible Lambeth is a network of food growers, food entrepreneurs and food activists who are working to improve our communities.

Our motto is 'If you eat, you're in' - it's that simple. Everyone can get involved with us - join our network today by signing up to become a member at www.incredibleediblelambeth.org

Membership is free and you will immediately be linked with hundreds of other growers, green spaces, allotments, gardens, parks and more throughout the borough.

Get in touch:
www.incredibleediblelambeth.org
questions@incredibleediblelambeth.org
[facebook.com/ediblelambeth](https://www.facebook.com/ediblelambeth)
[instagram.com/ediblelambeth](https://www.instagram.com/ediblelambeth)
[linkedin.com/company/ediblelambeth](https://www.linkedin.com/company/ediblelambeth)

Incredible Edible Stockwell
Please refer to the map for the location of the projects listed

Trail one: Larkhall Trail (7 steps)
 1. Triangle Adventure Playground
 2. Cylar Green Gardening Group
 3. Boleyn Meadow Estate Container Garden
 4. Hayford Avenue Members Garden
 5. TARA Gardens
 6. Dorset Road Living Walls
 7. Tradesman's Forest Garden, South Lambeth Library

Trail two: Stockwell Trail (7 steps)
 1. Lander Kith Garden, Edible Bus stop
 2. Lambeth GP Food Coop, Grantham Practice
 3. Stockwell Memorial
 4. Stockwell Bus Garage
 5. Maria's Garden on the Sturdy Estate
 6. Paradise Garden, Coade Court
 7. Clasp Adventure Garden
 8. Daste Nature Garden
 9. Larkhall Park Community Garden
 10. Larkhall Park
 11. Linton Grove Greenpace
 12. Heathbrook School Guerrilla Garden
 13. Eden Garden Clapham
 14. Valley Road Allotments
 15. Wandsworth Road Station Garden

Incredible Edible Stockwell

Legend:
 Orchard
 Toilets
 Seating
 Playground
 Health Centre
 Pharmacy
 Church
 View

Map locations:
 1. Triangle Adventure Playground
 2. Cylar Green Gardening Group
 3. Boleyn Meadow Estate Container Garden
 4. Hayford Avenue Members Garden
 5. TARA Gardens
 6. Dorset Road Living Walls
 7. Tradesman's Forest Garden, South Lambeth Library
 8. Lander Kith Garden, Edible Bus stop
 9. Lambeth GP Food Coop, Grantham Practice
 10. Stockwell Memorial
 11. Stockwell Bus Garage
 12. Maria's Garden on the Sturdy Estate
 13. Paradise Garden, Coade Court
 14. Clasp Adventure Garden
 15. Daste Nature Garden
 16. Larkhall Park Community Garden
 17. Larkhall Park
 18. Linton Grove Greenpace
 19. Heathbrook School Guerrilla Garden
 20. Eden Garden Clapham
 21. Valley Road Allotments
 22. Wandsworth Road Station Garden



Our latest projects

- Working with ARUP

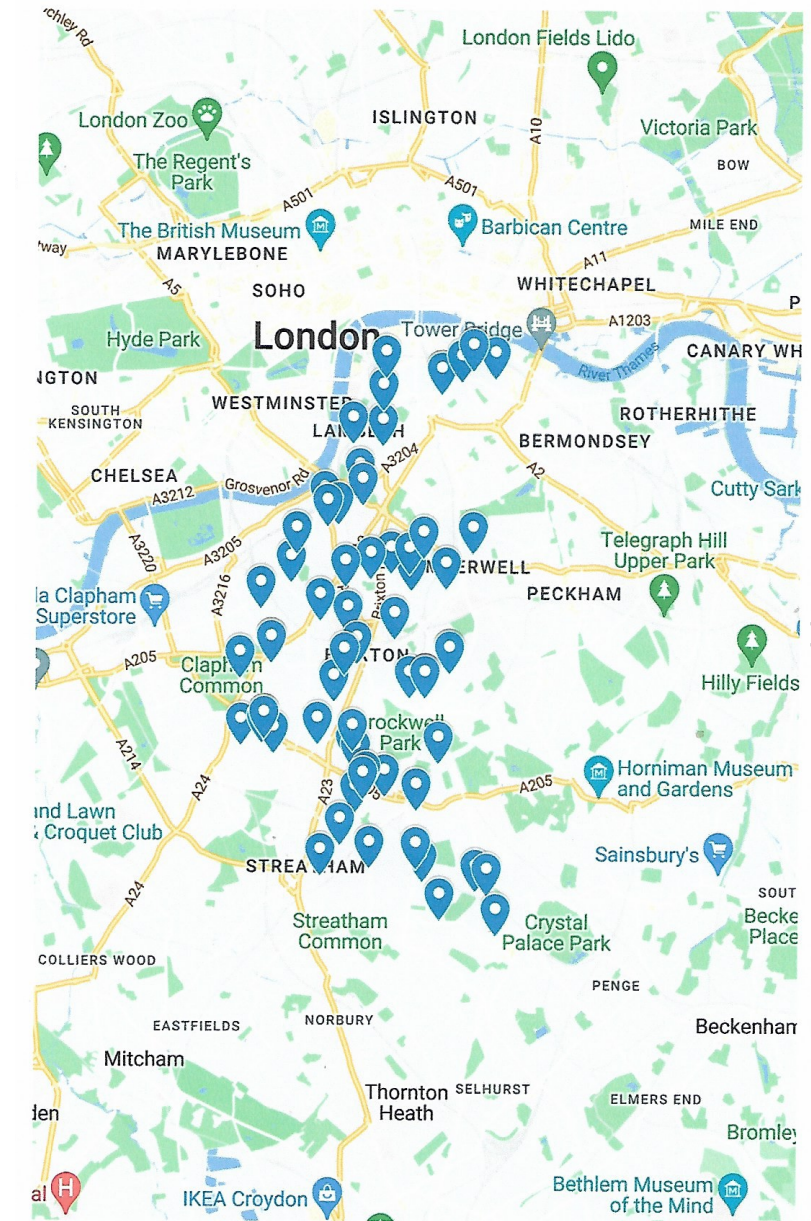
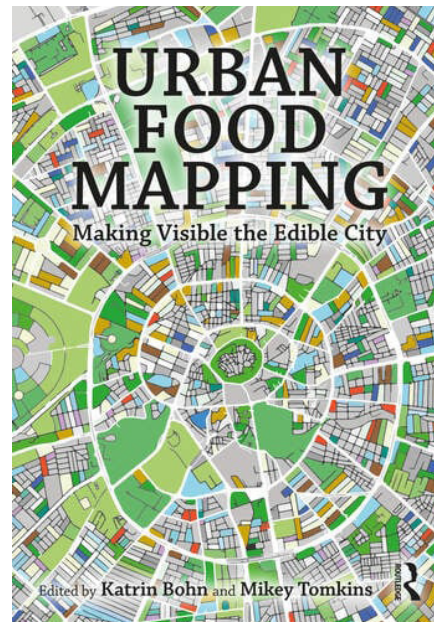
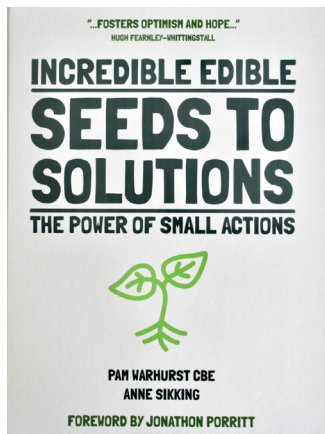
Project: invest in ARUP 2021-22 Lambeth Plots
ARUP Global Challenge 2022- ongoing

Funded by ARUP

Lambeth Plots: To map both digitally and ground based work to find and plot all the green spaces to grow in Lambeth, in line with Incredible Edible's national campaign on the Right to Grow food on land in the public realm, We were plotting areas of the greatest need overlaying with density and open spaces, this work led on to the Global Challenge.

Global Challenge: A world wide collaboration and framework for community growing. We were the 1st Developed country to win this prestigious funding. We are hoping to produce a template for how to find land take custody and grow on the land for all to benefit.

We are also mentioned in two books on growing food, Seeds to Solutions and Urban food mapping.



Our latest projects

- Lambeth Social Value Fund

Project: Biodiversity education within Lambeth on estates and public realm

Funded by Lambeth 2023-25

This project has not started yet, and we will be recruiting in the spring for either a full time post or two part time posts- we will keep you all informed - if you would like to apply let me know...

That is all from me for now
Any questions?

insectinside

**Life in the bushes of a
small Peckham park**



Penny Metal



Warwick Gardens

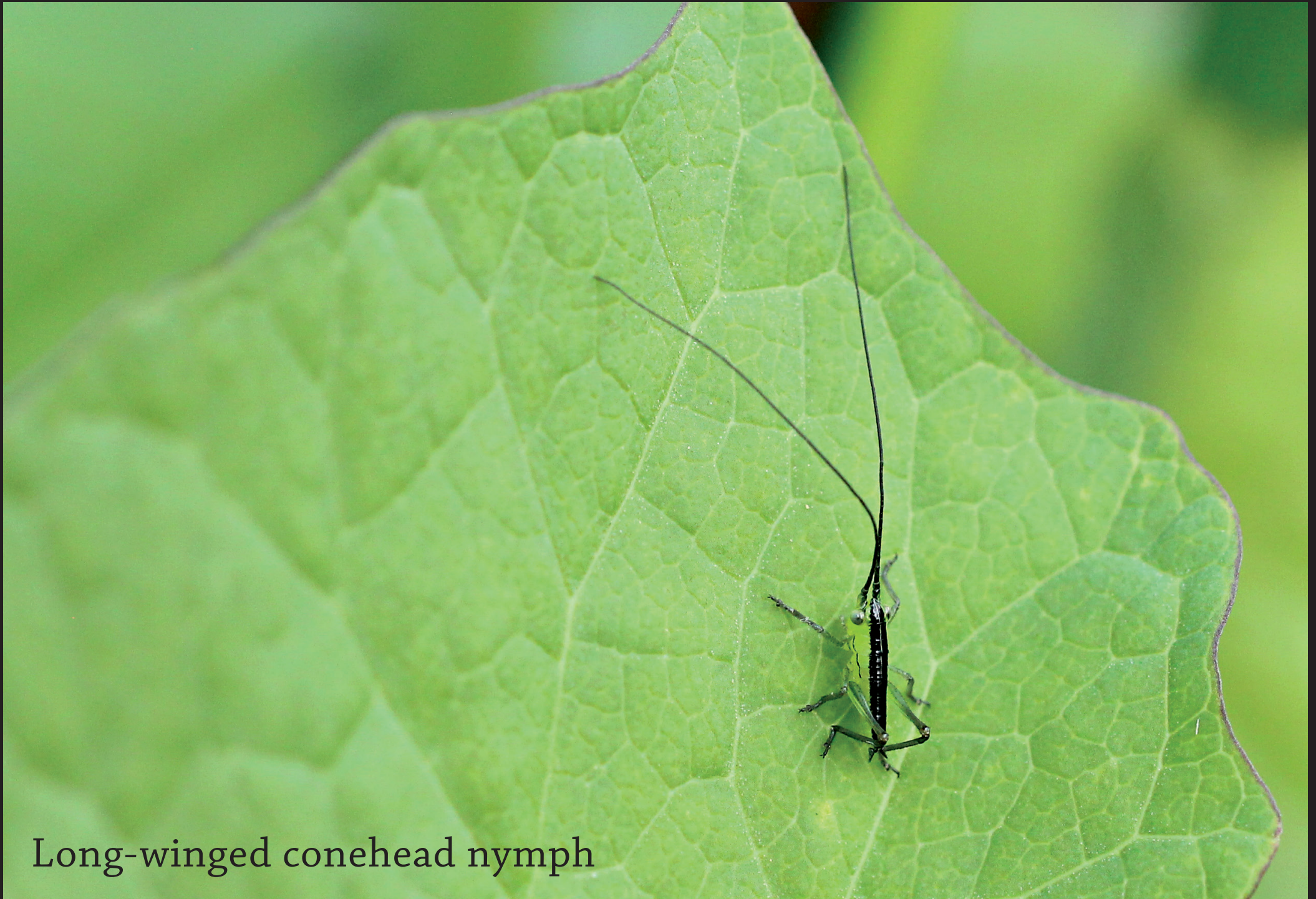


Warwick Gardens





Football Quarter



Long-winged conehead nymph



Roesel's bush-cricket



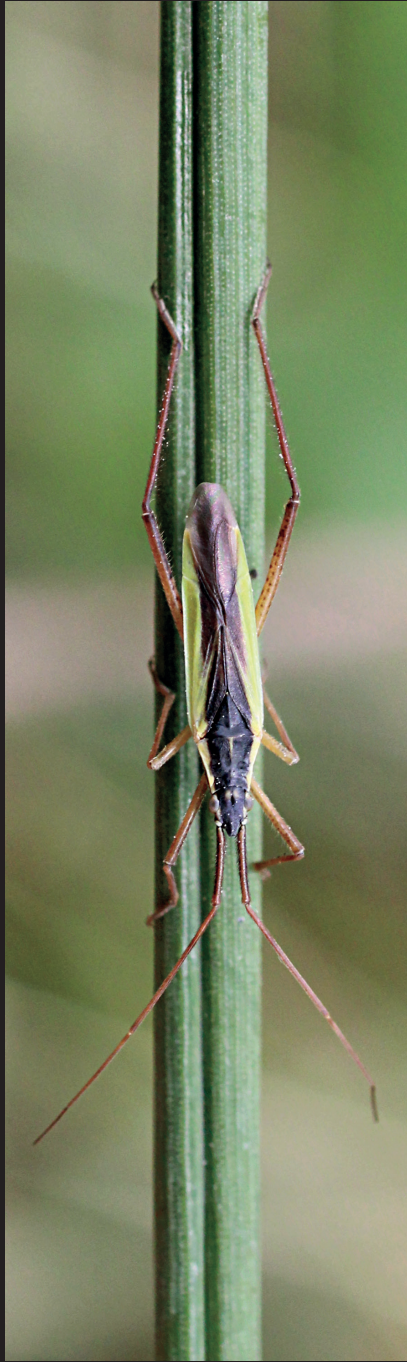
Rhopalus subrufus



Capsus atar



Mirid bugs





Stem-boring sawfly



Ladybird fly



Criorhina floccosa



Small tortoiseshell



Peacock



Common blue



Small copper



Toadflax Brocade



Ornate-tailed digger wasp



Thick-legged flower beetle



Fairy-ring longhorn beetle



Eared leafhopper



Issus coleoptratus



Mosaic leafhopper



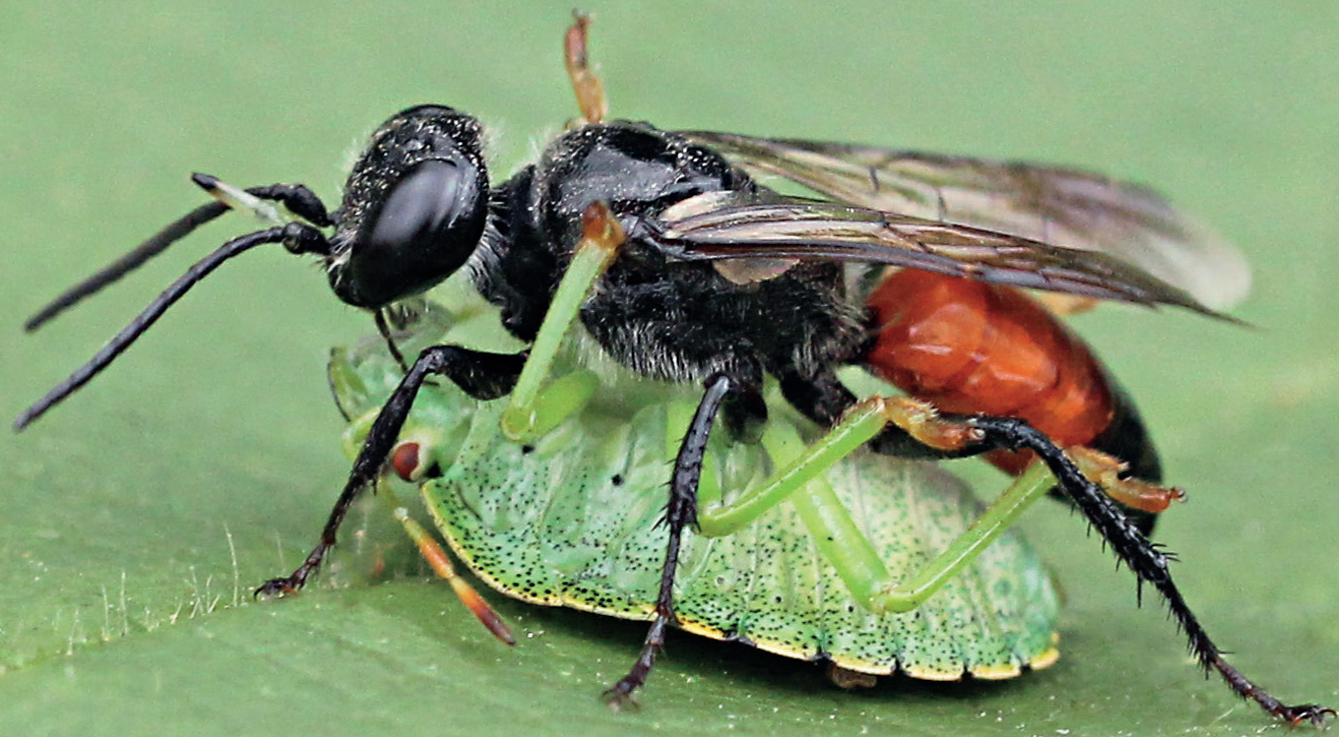
Mosaic leafhopper nymph



Mottled shield bugs



Crucifer shield bug



Astata boops



Ivy bee



Wasp spider





Log Quarter



Buff-tailed bumblebee



Hairy-footed flower bee





Red mason bee



Blue mason bee



Orange-tailed mining bee



Grey-patched mining bee



Red-girdled mining bee



Gooden's nomad bee



Myopa sp



Dark-edged bee fly



Broad-bodied chaser



Spider-hunting wasp



Ruby-tailed wasp



Ormyrus nitidulus



Digger wasp with hoverfly



Scissor bee



Gasteruption erythrostomum



Gasteruption erythrostomum



Rose chafer



Lesser stag beetles



Stag beetle



Scarce fungus weevil



Wasp beetle



Railway Quarter



Red-legged shield bug



Box bug



Hawthorn jewel beetle



Torymus auratus



Hawthorn shield bug



Parent bug



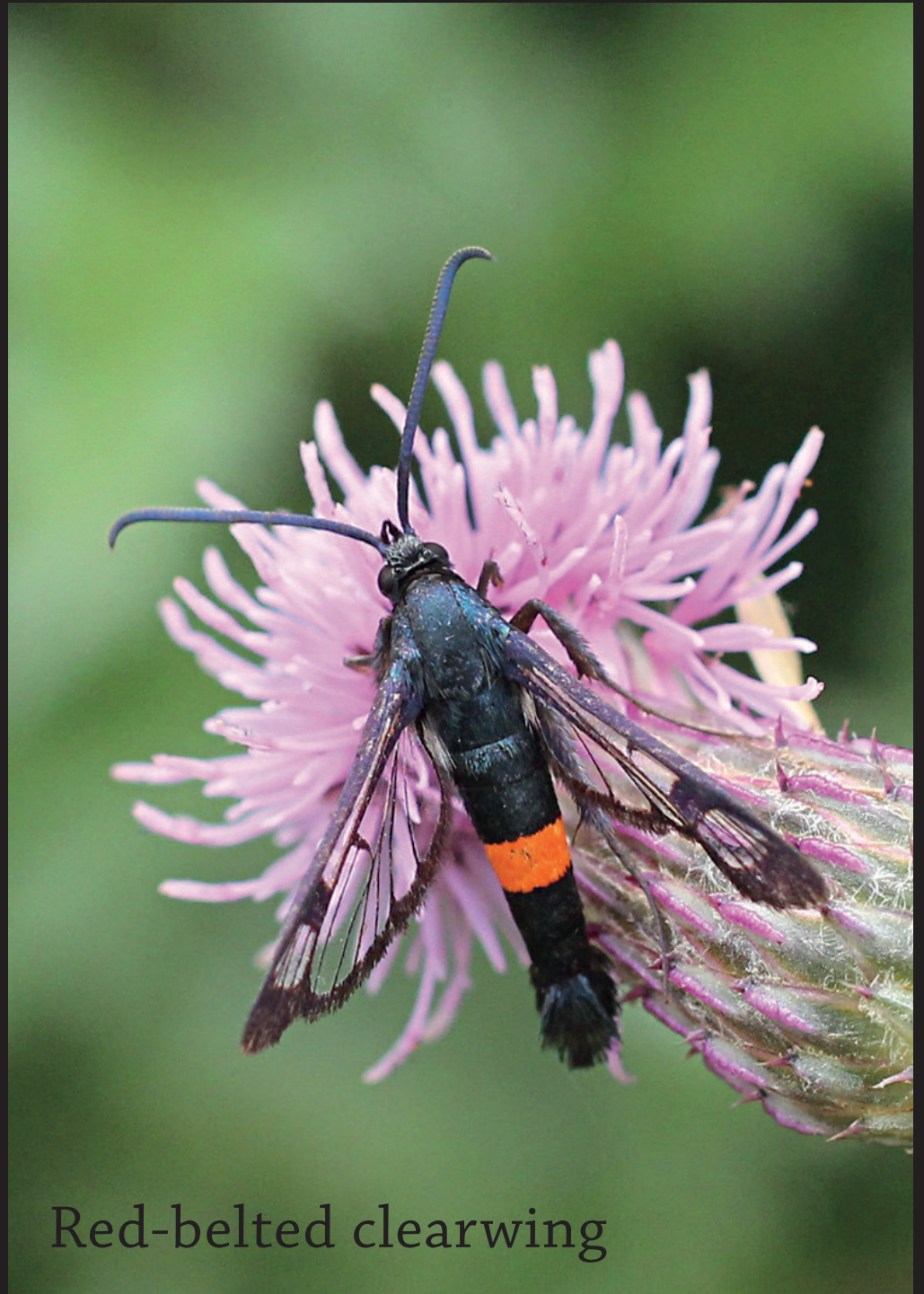
Parent bug nymphs



Lichen running spider



Red-tipped clearwing



Red-belted clearwing



Thistle weevil



Poo Corner



Speckled wood



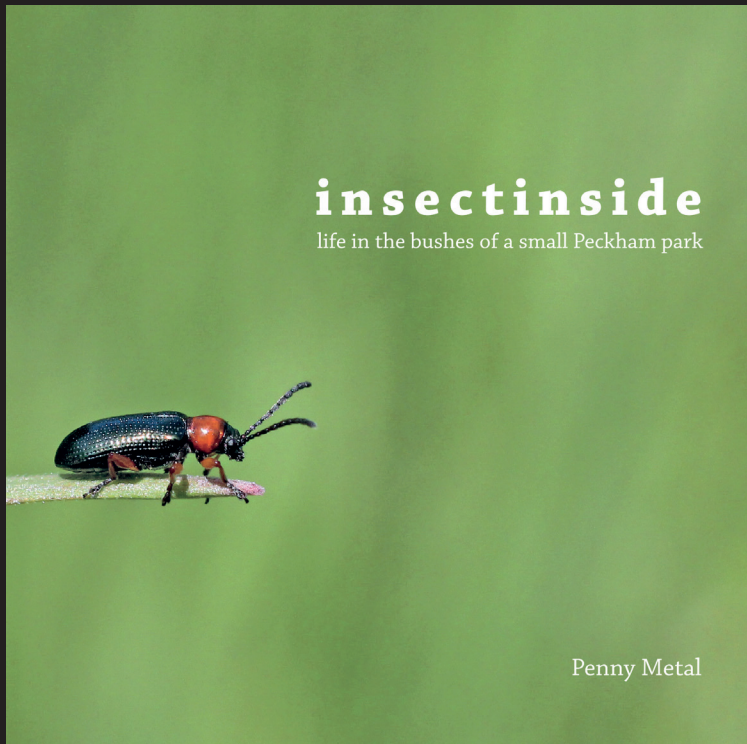
Common earwig



Globular springtail



Yellow dung fly



Instagram: penny.metal

Twitter: @misspennymetal

Flickr: Penny Metal

insectinside life in
the bushes of a small
Peckham park
available from:
insectinside.me

MERISTEM

DESIGN

Turning the grey green®

EXPERTS IN SUDS AND RAIN GARDENS

We install and plant sustainable drainage systems (SuDS) through rain gardens. They modify surface water flow to more natural rates, reducing the impact of urbanisation on flooding at source by allowing vegetation and plants to absorb the majority of the rainwater.

79

COPPER MILL LANE



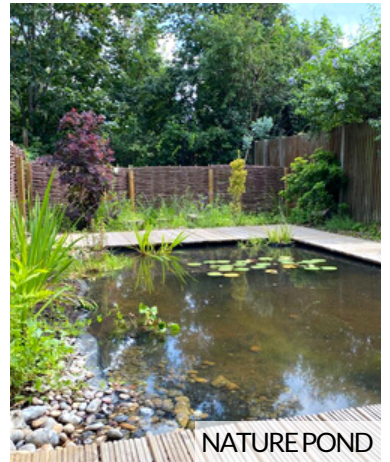
HACKNEY



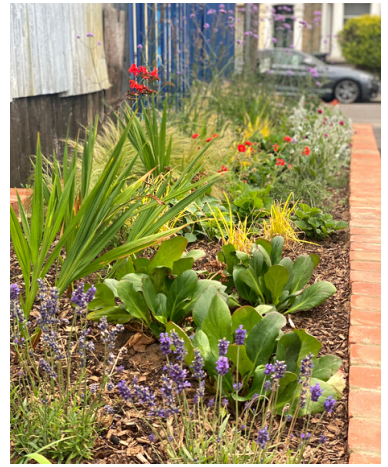
FOREST ROAD



NATURE GARDEN



NATURE POND



Eco Friendly Brentfield



Did you know?

- We create compost from weeds, cardboard and all of our kitchen waste.
- We have a wormery.
- We recycle our paper.
- We have lights that switch off automatically.
- We have solar panels to generate our own electricity.
- We have many animal habitats in our Wildlife Area.

Can you name some animals that you might find in the Wildlife Area?

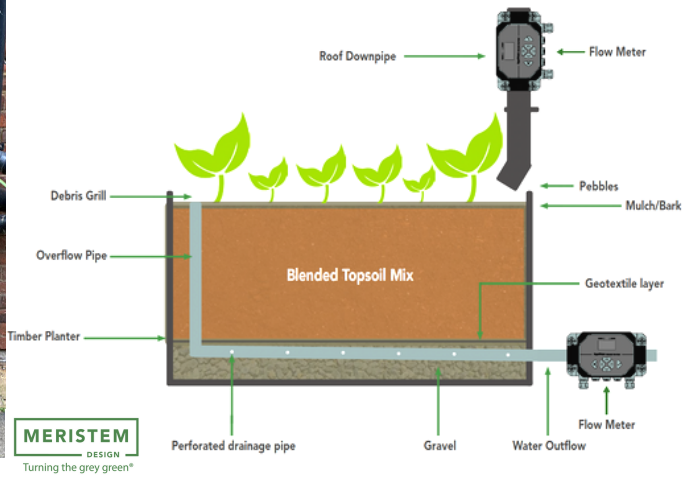
MERISTEM

DESIGN

Turning the grey green®

EXPERTS IN SUDS PLANTERS

Our SuDS planters are a sustainable way to manage rainwater run-off from rooftops. Our planters are supplied fully assembled and ready to connect into the existing drainage system.



Improving Biodiversity in Southwark



1. London is good for wildlife, but could be better
2. Cater for the whole life cycle of insects
 - a. Butterfly Conservation's **Wild Spaces** programme
3. Habitats in wildlife corridors should match those in nearby parks
4. Managing for insects creates a thriving ecosystem
5. Flower-rich grassy areas require low-fertility soils
 - a. They are then low maintenance
6. Can be little or no incremental cost
7. Build it and they will come
 - a. Most parks could support 20-25 species of butterfly
8. Lots of potential partners
 - a. SNAV, Butterfly Conservation, Buglife, Bumblebee Conservation Trust, Plantlife, Trees for Bermondsey, "Friends of" groups, Residents' groups, London Wildlife Trust ...

All these can be see in Burgess Park



BIG BUTTERFLY COUNT

16 JULY - 8 AUGUST 2021

Spend 15 minutes in a sunny spot. Use this chart to note how many of each species you see. Then submit your sightings at www.bigbutterflycount.org or download our free app

Recent arrival



ClouDED Yellow



Large White



Small White



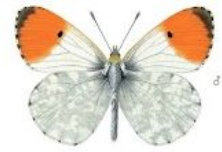
Green Veined White



Brimstone



Marbled White



Orange Tip



Essex Skipper



Small Copper



Speckled Wood



Meadow Brown



Ringlet



Gatekeeper



Small Heath



Large Skipper



Comma



Painted Lady



Peacock



Red Admiral



Small Tortoiseshell



Small Skipper



Brown Argus



Common Blue



Holly Blue



Silver Y



Six-spot Burnet



Jersey Tiger



White-letter Hairstreak



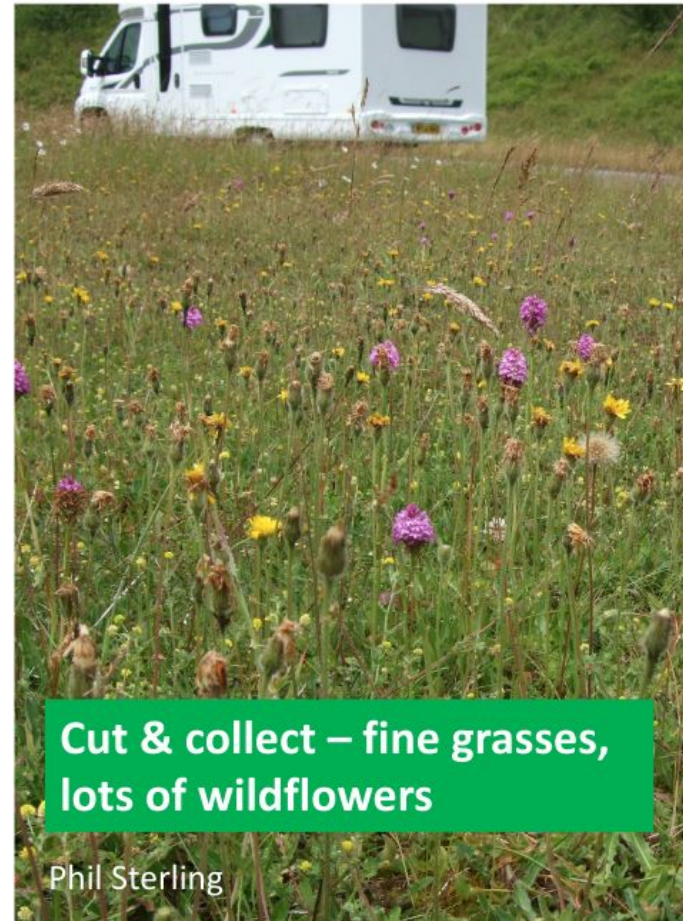
Images not to scale

Hutchinson's Bank, Croydon

High fertility

Low fertility
Topsoil removed 7 years ago (not cut since)

The long and short of it ...



See <https://wild-spaces.co.uk/>

LET'S CREATE WILD SPACES

CREATE MY WILD SPACE

IDEAS YOU CAN USE IN THIS TYPE OF WILD SPACE



Superstar plants for any Wild Space



Leave stems and flowerheads uncut over winter



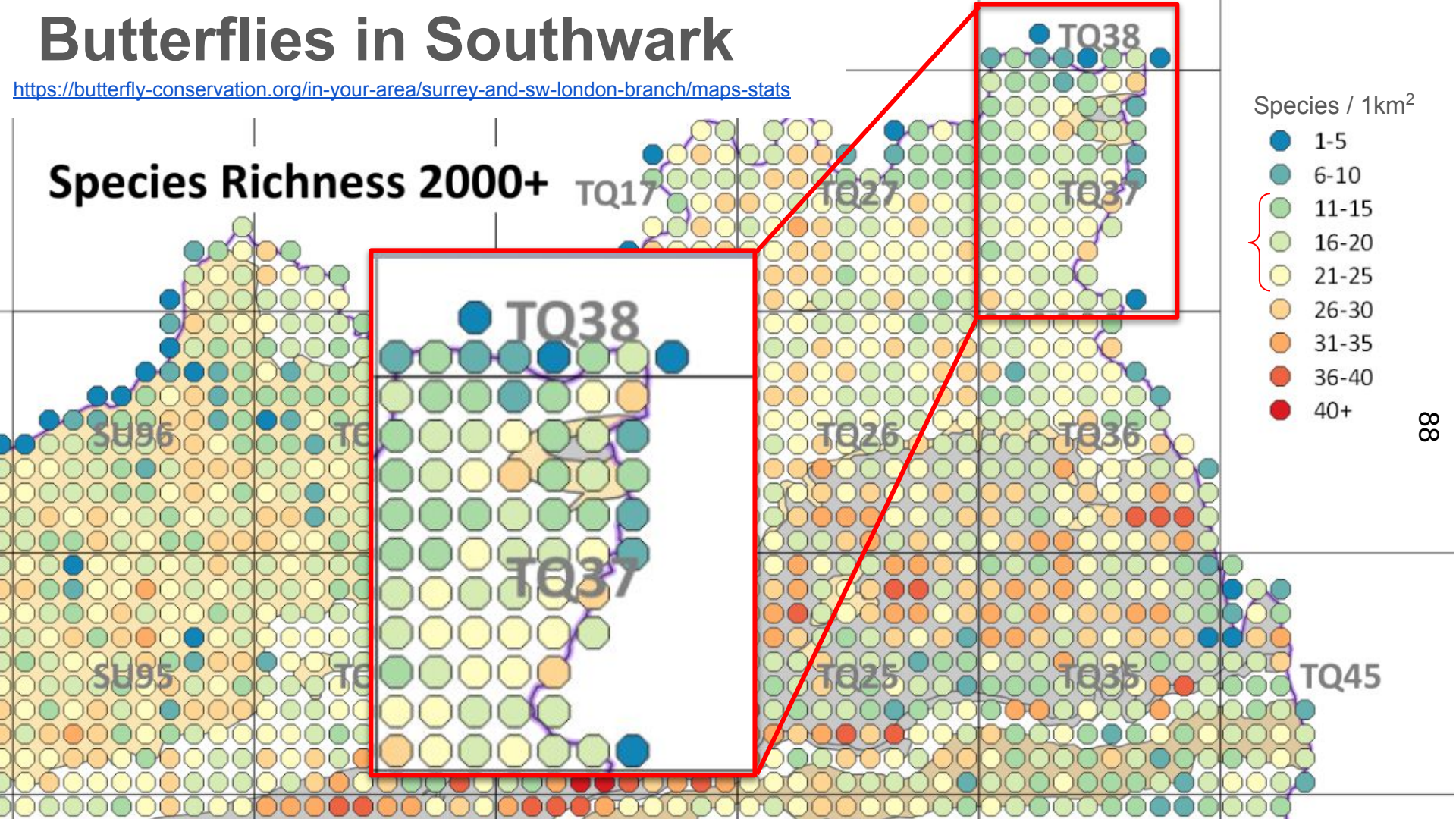
Make a butterfly fruit feeder



Butterflies in Southwark

<https://butterfly-conservation.org/in-your-area/surrey-and-sw-london-branch/maps-stats>

Species Richness 2000+



Species / 1km²

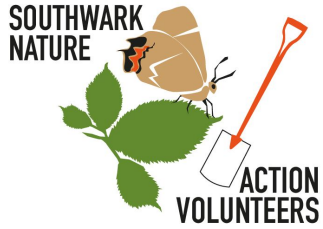
- 1-5
- 6-10
- 11-15
- 16-20
- 21-25
- 26-30
- 31-35
- 36-40
- 40+

88

Strategies for Nature Recovery in Southwark

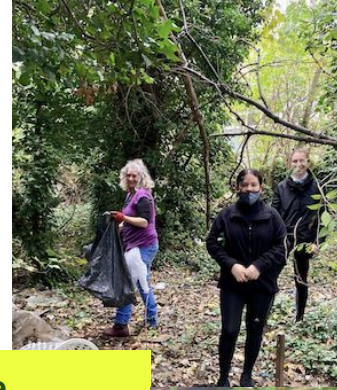
— Southwark Nature
Action Volunteers —

Presentation 27/02/2024 - Environment Scrutiny Commission



- 1. SNAV's Vision for Nature Recovery in Southwark**
- 2. Bigger**
- 3. Better**
- 4. More Joined Up**
- 5. Spotlight Strategy: De-paving**
- 6. Nature Recovery, Corridors, and the Planning Framework**

Vision



For nature
Southwark's many species will more easily find the particular resources they need to survive and thrive



For people
-All residents will easily experience significant nature close to home
-Safe and pleasant active travel



In order to achieve this.. Southwark's places for nature need to be Bigger, Better, and More Joined Up

Bigger

IMAGINE ...

- A nature corridor from the Thames to Sydenham Hill Wood.
- Along the Thames, warblers nest among healthy reedbeds.
- Further south, you encounter woodlands, meadows, thickets, scrub, grassland, rivers, wetlands and ponds.
- The mosaic of connected habitats support a diversity of populations including bats, tawny owls, frogs, toads and slow-worms.



Bigger

Opportunities exist to:

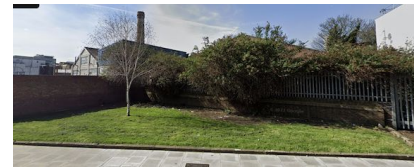
- Further reduce mowing amenity grassland (inc housing land)
- De-pave for pocket parks and habitat (more on de-paving later)
- Create acres of new habitat on rooftops
- Recognise a 60m buffer zones around SINC boundaries
- Recognise more existing wildlife corridors



Lambeth's Myatt's Fields unmown



London Bridge Green Roof



An unused parcel before



...Became the Elmington Wildlife Triangle, part of a corridor



Peckham Rye-mowing could be reduced further

Better

By strategic design ...

- Retain water
- Make the most of street trees
- Reduce artificial lighting
- Reduce hard surfaces
- Planting trees is good but not enough

Don't let rainwater go straight down the drain.

Cherish, harvest, store and use it.

Southwark needs more evenly distributed ponds. to support wildlife

No New Unnecessary Concrete Surfaces

Especially on Council land. Recycle alternative surfaces, and substrates.

Minimise light pollution

Especially near SINC's.

Downlights, movement sensors use less energy

Street trees chosen for their benefits to wildlife.

Nuts, berries or nectar and pollen.

Tree pits large enough for underplanting.

Manage parks and green spaces for more diverse habitats.

A mosaic of different habitats is required to support wildlife.



More Joined Up

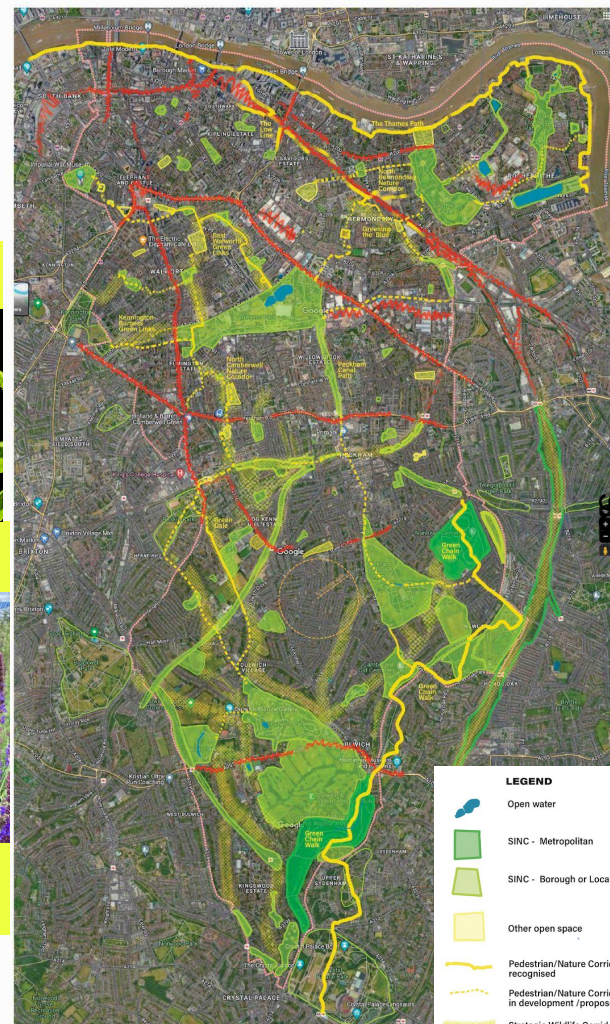
Wildlife populations that have access to more than one SINC have a greater chance of survival and resilience



Per GLA guidance, the Local Nature Recovery Strategy needs to be more geographically specific than biodiversity action plans

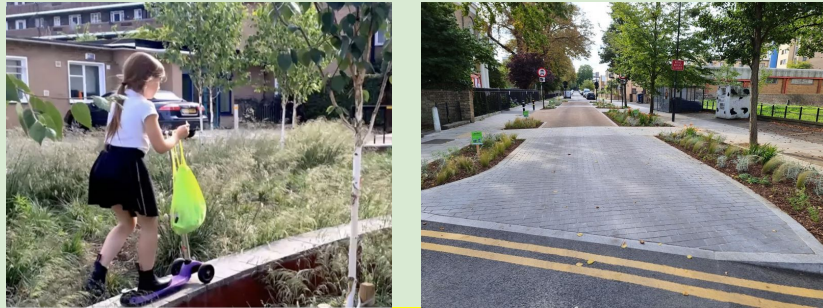


We need to identify and recognise certain locations as critically strategic for wildlife and prioritise these for protection, planning, and retrofitting:



Southwark Nature Connectivity Map

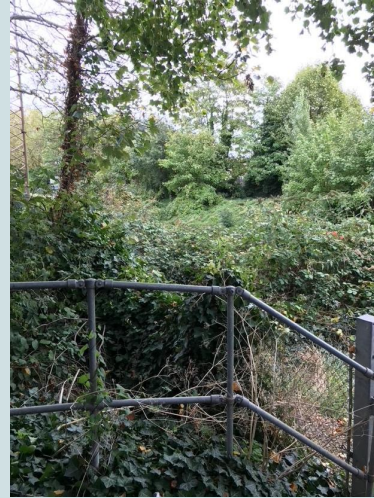
More Joined Up: Planning strategic routes with two types of corridor



1. Pedestrian/Nature Corridor - Connect green spaces

Continuous, or very frequent “biodiversity stepping stones”

railway cuttings



adjoining back gardens



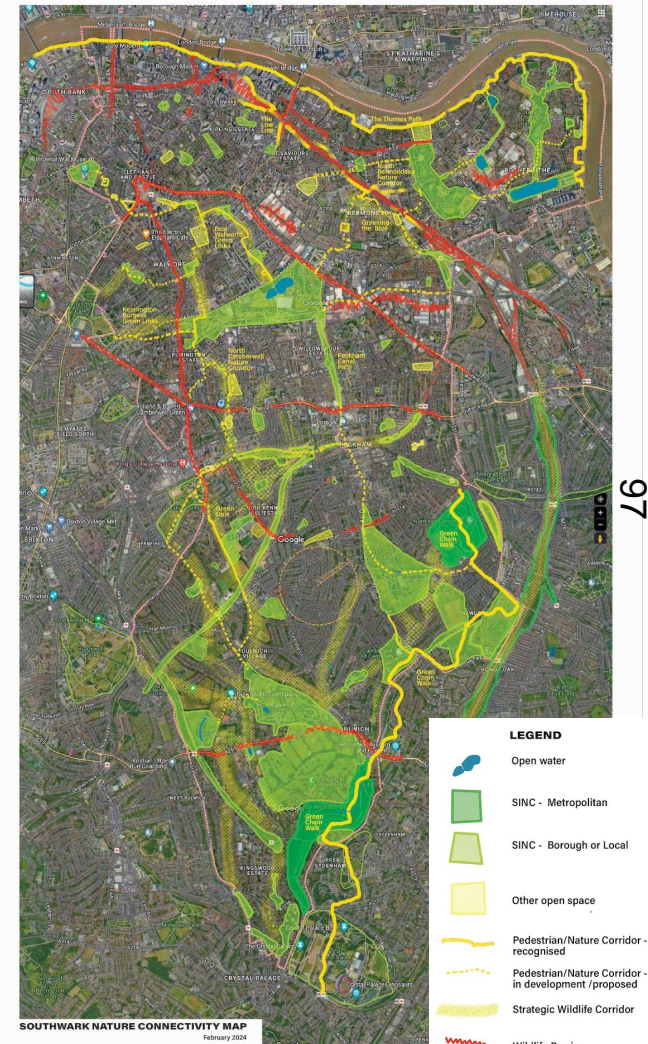
2. Strategic Wildlife Corridor

Wildlife moves through here, but the public may not be able to.

These inaccessible areas are critical for wildlife survival and nature recovery.

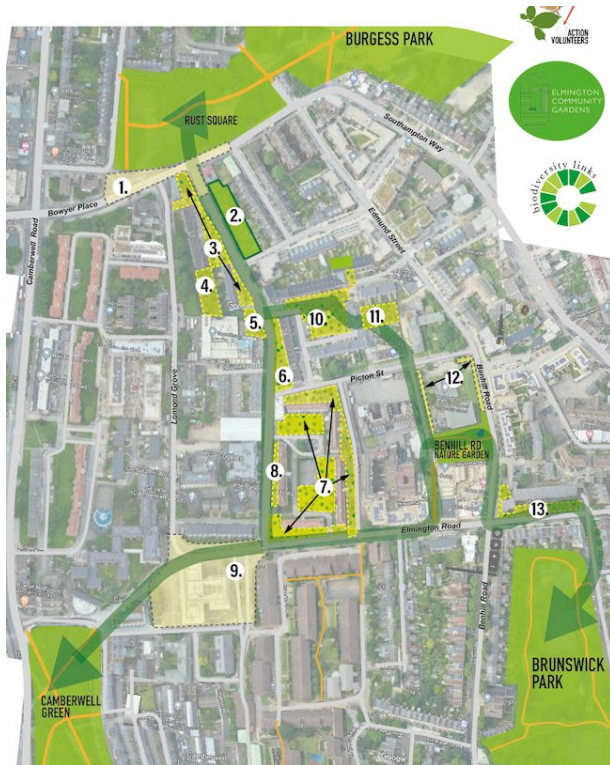
Specific Points to be noted from the SNAV Southwark Nature Connectivity Mapping Exercise

1. **Strategic wildlife corridors** -need more study, protection, and recognition.
2. **Peckham Rye Lane area** -major missing link
3. **Canada Water** - massive opportunity
4. **Old Kent Road Opportunity Area** -reduce barrier
5. Consider **SINC buffer zones** to protect habitats against overshadowing, noise, light, traffic
6. **Work in progress** - more ideas for active travel routes have been collected by Southwark Living Streets group and others.
7. All nature corridors need to link effectively to SINCs **beyond the borough boundary.**



More Joined Up: Corridors in the Community

North Camberwell Nature Corridor



Much of the proposed site has been pedestrianised, but is lacking in greenery and suffers from poor drainage. The neighbourhood is at risk of contaminated surface water flooding as well as river flooding.

Over-paved conditions create unnecessarily high peak flows and do not allow optimum water uptake or carbon capture by existing trees.

This neglected entry to the local park could become an adjacent mini-catchment woodland. We propose to add new trees to store existing bins, with green roofs cladding to form new woodland, a high-pollute part of the afternoon cascade.



The network of greened sites will also form a strategic nature corridor linking the local. Site of importance for Nature Conservation, improving conditions for local biodiversity and residents' health.



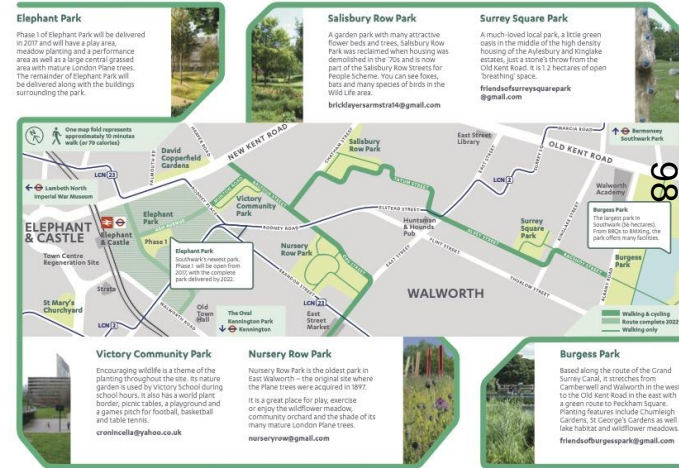
We are proposing a network of greening projects to improve run-off management in this densely populated, flood-prone, nature-deprived urban neighbourhood. We will carefully design measures and strategically remove excess hard surface to store floodwater in new vegetated zones, conserving and incorporating existing trees, creating mini catchment woodlands and kerbside vegetated swales.

North Bermondsey Nature Corridor

Engagement with local residents in the design is essential for good design, engagement and stewardship. Local residents have best knowledge of how local land is currently used.

Establish biodiversity baselines, gather evidence and monitor effectiveness through surveying

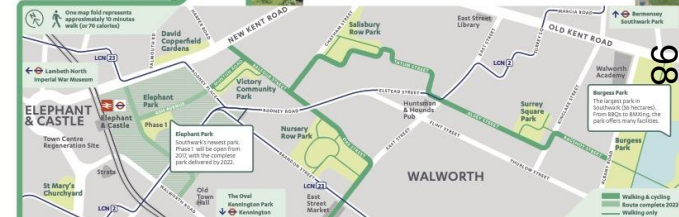
Walworth Green Links



Elephant Park
Phase 1 of Elephant Park will be delivered in 2017 and will have a play area, meadow planting and a performance area as well as a central grassed area with mature London Plane trees. The remainder of Elephant Park will be delivered along with the buildings surrounding the park.

Salisbury Row Park
A garden park with many attractive flower beds and trees. Salisbury Row Park was reclaimed when housing was demolished in the 70s and is now part of the Salisbury Row Streets for People Scheme. You can see fountains, bins and many species of birds in the wild life area.

Surrey Square Park
A much-loved local park, a little green oasis in the middle of the high density housing of the Aylsbury and Kinglake estates. Just a stone's throw from the Old Kent Road. It is 1.2 hectares of open breathing space.



Victory Community Park
Encouraging wildlife is a theme of the planting throughout the site. Its mature garden is used by Victory School during school hours. It also has a world plant border, picnic tables, a playground and a games pitch for football, basketball and table tennis.

Nursery Row Park
Nursery Row Park is the oldest park in East Walworth - the original site where the Plane trees were acquired in 1897. It is a great place for play, exercise or enjoy the wildflower meadows, community orchard and the shade of its many mature London Plane trees.

Burgess Park
Based along the route of the Grand Surrey Canal, it stretches from Camberwell and Walworth in the west to the Old Kent Road in the east with a green route to Rockham Square. Planting features include Charnleigh Gardens, St George's Gardens as well as late habitat and wildflower meadows.

Spotlight Strategy: Systematic De-paving

The Octopus Garden



Elmington Estate

Benefits residents' physical and mental health

Increases opportunities for greening and wildlife recovery

Reduces flood risk

Reduces urban heating (heat island effect)

Increases carbon sequestration

Absorbs and filters pollutants

Facilitates active travel

Solutions for De-paving



Maltby Street

Pedestrianisation without greening is a wasted opportunity



Liverpool Grove



Bowyer Place

When planting trees, make tree pits as large as possible, rather than the minimum

Underground utilities or poor drainage may affect design of suds or tree planting, but does not prevent most de-paving

Bigger, joined-up areas are more cost-effective per m2

Correct plant selection increases wildlife benefit and reduces maintenance concerns. A robust community of native/adapted plants will out-compete weeds

Reduce costs and missed opportunities by increasing coordination and joined-up thinking - Dig Once

Design de-paving projects carefully, in close collaboration with local residents. Investigate increased community and volunteer management.

Inexpensive native/adapted seed mix and whips can provide acceptable aesthetic value and many of the desired benefits, at reduced costs.

Urban Nature Recovery Requires De-paving

What Southwark Can Do Now

More joined-up! Flood Risk, Trees/Ecology, Parks/Nat Env, **Highways, Housing**, Climate Change, community/volunteer groups, internal design review - **Dig Once**

Technical guidance and support from DEFRA, CIRIA, Thames Water, NGOs, insurance

Identify Funding internal and external

Cost effectiveness De-paving larger areas, with low-cost, low-maintenance planting schemes, can deliver important immediate value and create future opportunity

Culture/baseline shift Let de-paved be the default

Nature Recovery, Corridors, and the Planning Framework

Strategy and Policy

- Urban Greening Factor (UGF)
- Biodiversity Net Gain (BNG)
- Southwark Plan: SPD and SPG
- Climate Change action plan
- Green Infrastructure Plan
- And many more

Better

Policies beyond the minimum must clearly state Council's leadership goals increasing green/nature spaces, green infrastructure

Bigger

Climate change and biodiversity planning policies need to be stronger

Funding/co-ordination of activity across developers

Community action can help deliver on the ground activity
- hundreds of small changes -
local neighbourhood - engaged in consultation and collaboration

More joined-up

Strategic planning of the vision and big goals - to get the "golden thread" across multiple strategies

Southwark Council support for food growing and community gardening




What the role covers

- Main point of contact within council for existing community growers and new enquiries about community gardening and food growing
- Supporting the network of growers via e-newsletter, informal introductions, linking to existing networks and mapping
- Organising networking events, development of a working group
- Increase food growing opportunities on estates, focus on building resilient and sustainable groups and projects, and give advice to others in the borough
- Community engagement link for other related projects such as reduced mowing trials and composting
- Strategic development promoting community gardening and food growing within the council – working with Public Health, Ecologist, Planning, New Homes, Grounds Maintenance, Resident Services, Climate Change, Housing teams



Allotment Expansion Guarantee

- The AEG aims to increase the number of food-growing plots available in the borough, by establishing a process and support for residents to create new food-growing spaces on housing land
- Launched in April 2021 with a target to create 200 new growing plots in 2 years
- Residents can find out more and register their interest via a dedicated website: <https://allotmentexpansionguarantee.commonplace.is/about>
- New groups are encouraged to join Southwark's map of community gardening and food-growing sites and to benefit from being part of this network (www.goodtogrowuk.org/map/southwark)



Council:

- Meet interested residents; site suitability/ permissions
- Support group development, advise on project plans, designs and engagement activities
- Provide funding, or advice about funding sources
- Coordinate build of gardens
- Provide initial food -growing training and ongoing advice

Residents:

- Bring together group of at least 5 residents to develop project
- Work in partnership with the council to establish local needs, create project plan and resident consultation
- Sign an agreement to manage any future garden, including coordinating plot allocations
- Fundraise for garden development, ongoing garden costs and repairs

So far..

- By end of March 2024 18 new community allotment gardens created. 220 plots completed with 5 new projects in development
- Short film to show two of new projects – at Elmington and Brandon Estates:
<https://www.youtube.com/watch?v=C9GH5NluW-AQ>
- Map of food growing plots and community gardens, developed in partnership with Sustain:
<https://www.goodtogrowuk.org/map/southwark>

Videos



Would you like to grow your own food?

YouTube · southwarkcouncil
7 Jan 2022

Southwark map | Good to Grow

good to grow

Map Join us About us News Sign in

All gardens Good to Grow Day Southwark food-growing plots Volunteer Search

The place to find and volunteer for community gardens in Southwark.

Click on a pin on the map to show gardens in that area, or use the option above to find Good to Grow gardens near you.

Key

- Gardens in the Good to Grow Day (23 - 26 April)
- Gardens
- Gardens looking for volunteers
- Inactive Gardens
- Southwark food-growing plots: plots available
- Southwark food-growing plots: join waiting list
- Southwark food-growing plots: plots not available

Southwark Council
southwark.gov.uk

Training

Food Growing Training

New sites receive monthly sessions with a local Community Gardener to bring new groups together and increase skills for new growers. Groups can apply for Getting Involved funding to continue to have sessions after year one.

Community Organising Training

Two free day courses funded by Natural England to increase organising skills of community gardeners in Feb and March 2024; Introduction to Community Organising and Action for Change.



Network building

- Support a borough-wide Community Gardening network
- *Who?* Everyone involved in community gardening or food growing in Southwark
- *How?* E-newsletter, SLACK channel, introducing projects to each other, and networking events
- *Outcomes?* The network promotes peer-to-peer support to enable residents to share experience and good practice
- Engaged group who advocate for and engage with more greening opportunities in the borough
- Connects gardeners with council and external initiatives related to climate change, mental and physical wellbeing



Network events

13 July 2023

- Listening event at Red Cross Garden
- 26 attendees
- One of the outcomes was the ask for council support for a community gardening working group to focus on relevant topics

14 October 2023

- Community Gardening Working Party at the Paper Garden in Surrey Quays
- 40 attendees
- The working group focus was on solutions to dealing with green waste and increasing composting and made several interesting recommendations



Composting Pilot 2024

Compost Doctor

The Compost Dr will go around the borough to inform and train residents at community gardens / allotments on how to compost and improve their composting within their unique space. Launch at St Francis Park 15th March 2024

Community Compost Hubs

These hubs will act as demonstration sites for others to visit and learn from. The composting hubs will be provided with new compost bins, tools and equipment and a garden shredder. They will also have support from a Compost Dr who will train all the participants. Collaboration with Grounds Maintenance and Trees team for hyper local materials



Countisbury Estate



Melford Court



Brandon Estate



Elmington Estate



Camberwell Triangle



Rouel Road



Rouel Road



Gloucester Grove



Rockingham Estate





communitygardening@southwark.gov.uk